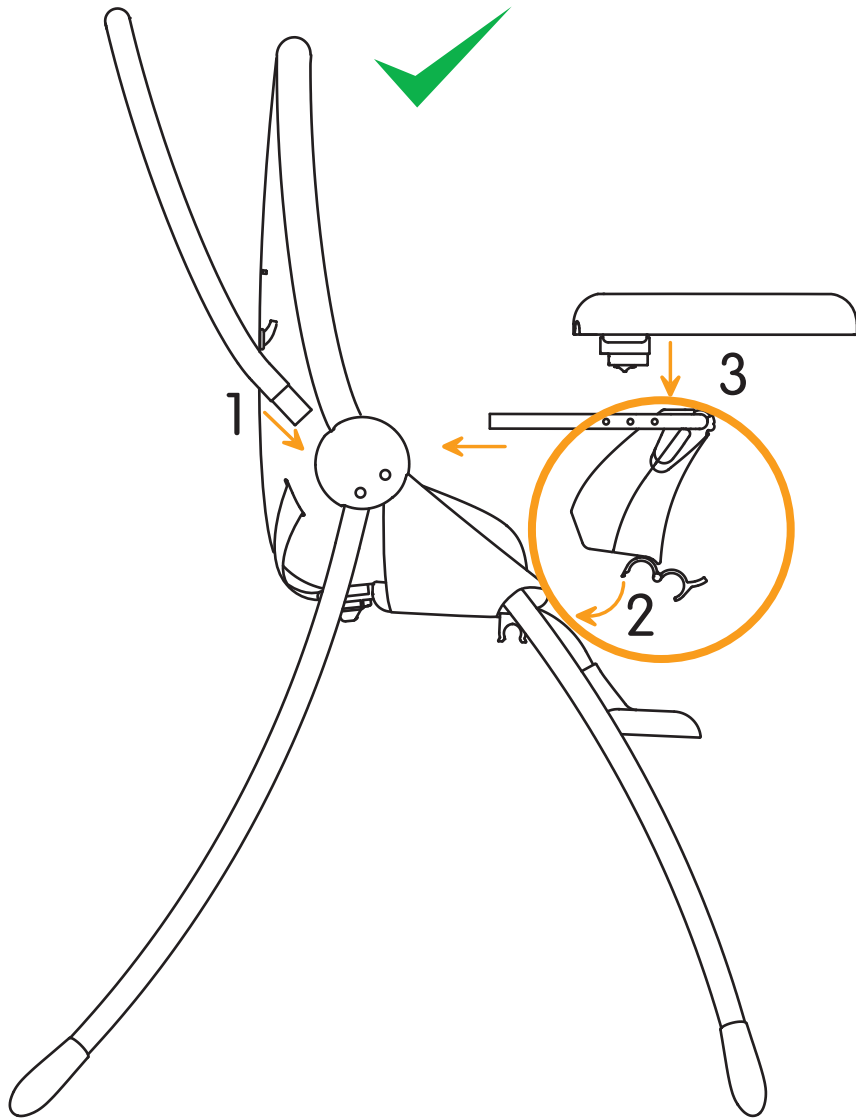
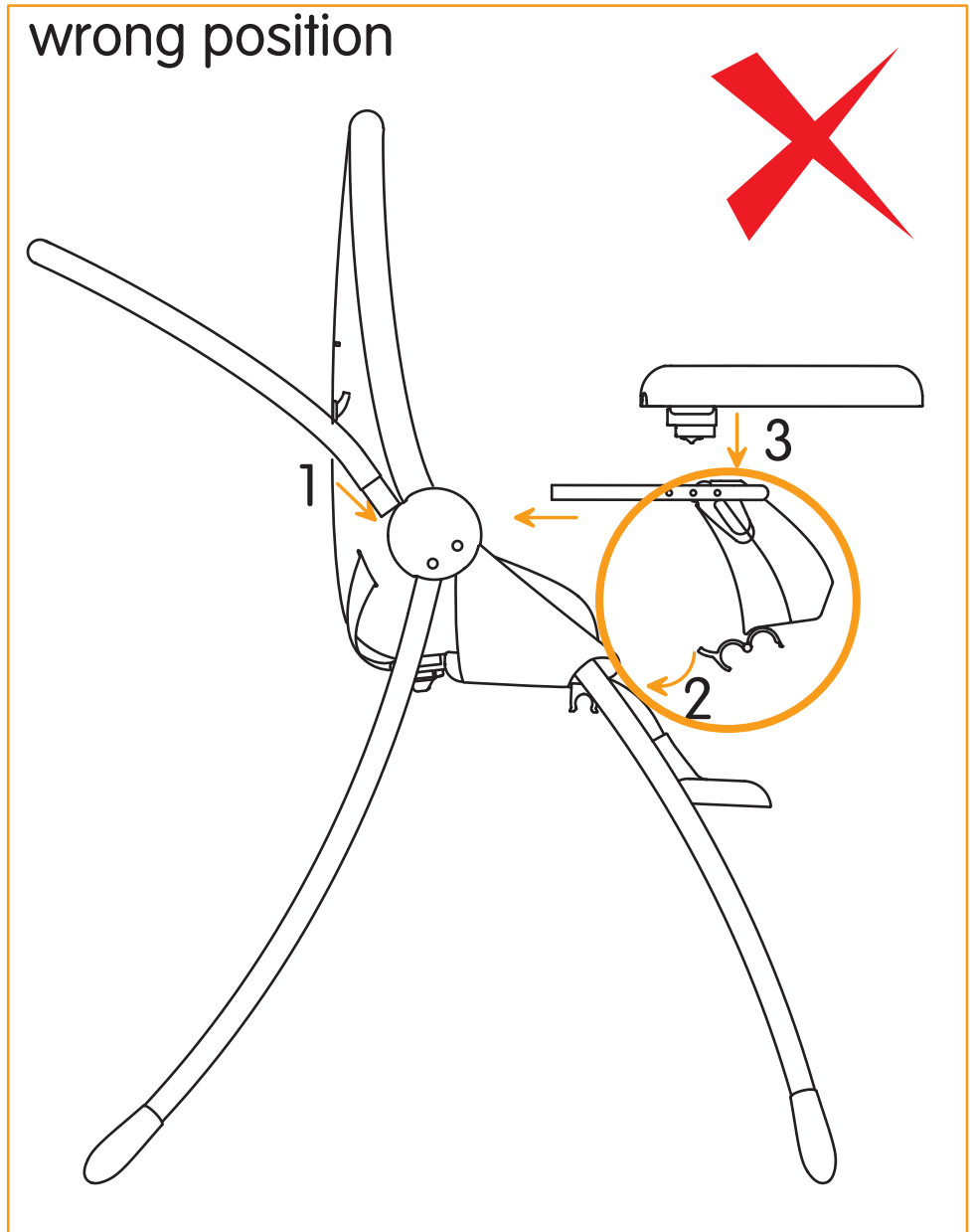


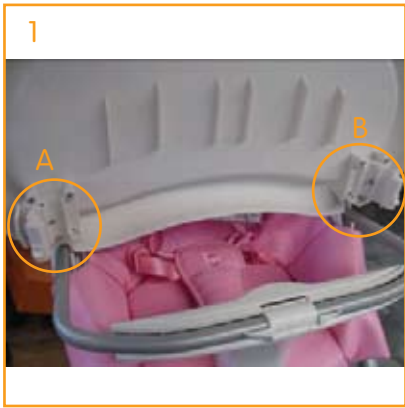
correct position



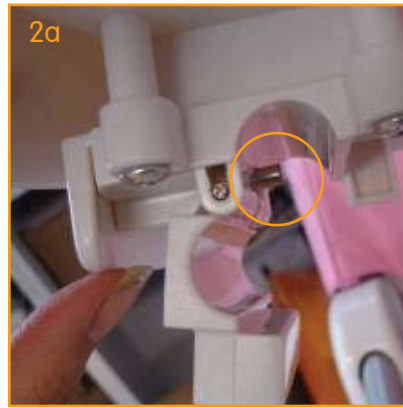
wrong position



nano bloom tray quick assembly guide (for further details refer to user guide)



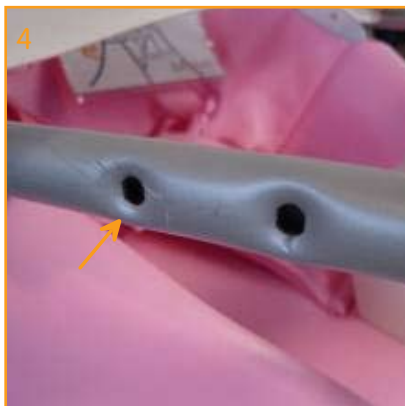
1. Make sure the clips and locks are open



2. Pull the side catches so pins retract



3. Place tray on safety bar (with pins retracted)



4. Ensure the pins insert into holes



5. Lock the tray as shown (you will hear an audible click)



standard specification

